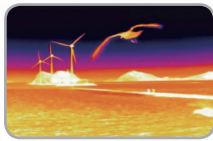


ULTIMATE SURVEILLANCE SOLUTION



Thermal Imaging Camera

IP66 Weatherproof



TPV-IASW is a stable static night vision camera equipped with a micro bolometer thermal imaging sensor. Embedded with QIET(Quality Imaging Enhancement Technology) , AOZ(Advanced Optical Zoom) and Virtual PTZ it is ideal for short and medium-range perimeter surveillance purposes and provides remarkable sharp and detailed images under ultimate harsh weather conditions.

OPEN TYPE CONTROL PANEL



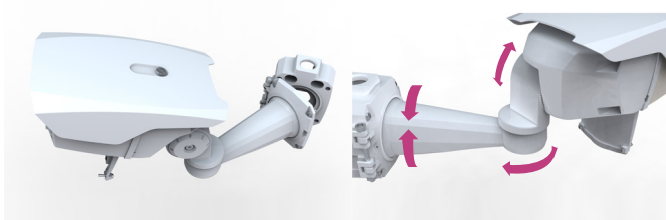
TBT's TPV-IASW is equipped with a flip-down controller, allowing the user to easily adjust the OSD menu after installation.(Depending on the model)

IP66 WEATHERPROOF HOUSING



IP rate, the most important value of the ultimate weatherproof video surveillance solution. Comparing most global competing products achieving IP66 rate on the market, TBT TPV-IASW Series proves its superb technical advantage achieving the high performance on the ultimate weather conditions.

BRACKET & JUNCTION BOX



Easy to install by built-in junction & Easy to adjust by 3-axis bracket.

NETWORK SPECIFICATIONS

IP	
Video compression	H.264, MJPEG
Resolution	NTSC : 720x480, 704x480, 320x240, 160x112 PAL : 720x576, 704x576, 352x288, 160x112
Security Management	User ID & password Protection, IP Filtering
Application Programming Interface	ONVIF, PSIA
Network	
Interface	RJ-45, 10/100 Mbps
Access Network	Static, DHCP
Protocol	HTTP, HTTPS, TCP/IP, ftp, telnet, ARP, RARP, SMTP, SNMP, RTP/RTSP
I/O	
Interface	IP
Frame Rate	
Thermal	Max 30fps(NTSC), 25fps(PAL)
Video Streaming	
Thermal	Dual Record
Record	
Thermal	Dual Record
Bit Rate control	
H.264	VBR Level (5 Level) / CBR (32K ~ 12Mbps)
MJPEG	Bandwidth Limit
LEVEL	Highest, High, Normal, Low, Lowest
Motion Detection	
Block	12x12=144 blocks
LEVEL	-100 ~ 100
Upgrade	
Remote	Remote Upgrade via IP Network (Chrome, Firefox, Safari Support)
FTP	Upgrade from FTP server
Client / Viewer	
Web viewer	Simple Access via Internet Explorer (Chrome, Firefox, Safari Support)
Smart N.V.R	VMS Software
Dynamic IP	
DDNS support	Dynamic DDNS support (www.ipcctv.com)
Time Configuration Management	
Manual	Manual Configuration
NTP	Sync to Time Server
External Storage	
Micro SD (SDHC)	Max 64GB

TPV-IASW

THERMOGRAPHY WEATHERPROOF IP CAMERA



FEATURES

Thermal Imaging Camera

- 720 x 480 Super Clear Video Resolution
- AOZ (Advanced Optical Zoom)
- Built-in TEC (Thermo Electric Controller)
- Direct Short Key Controls on Control Board
- Lowest NETD : <40mk

Temp. Detection

- Spot Temp. Measurement
- Area Temp. Measurement
- Center Temp. Measurement
- Detecting Alarm
- Emissivity Correction



IP Network

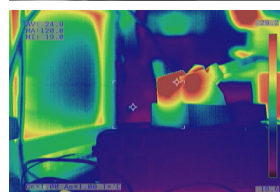
SPECIFICATIONS * Specifications are subject to change without notice.

THERMAL MODULE	
SENSOR	
Thermal Sensor	Uncooled Microbolometer
Pixel Pitch	25μm
Wave Length	8 ~ 14μm
NETD	40mK / @F1.0
VIDEO	
Output Frequency	NTSC : 59.94Hz (30fps), PAL : 50Hz (25fps)
Video Output	CVBS : 1.0Vp-p/75Ω
Array Format	384 x 288
Output Resolution	720 x 480(NTSC) / 720 x 576(PAL)
LENS	
LENS	19mm (FOV 28.4° x 21.5°)[Basic] / 11mm (FOV 47.1° x 36.2°)[Option]
MEASUREMENT	
Detect Mode	Spot (10 Spot) / Area (1 Area) / Center
Temperature Range	-20°C ~ 120°C / -20°C ~ 650°C [Option]
Accuracy	±2°C or ±2% / ±12°C or ±2%(>100°C)
Emissivity Correction	0.01 ~ 1.00
Alarm	All / Spot / Area / Center Selectable
FUNCTION	
Calibration	Auto/Manual/Interval
Mide Level	1 ~ 15 (15 steps)
Sharpness	1 ~ 10 (10 steps)
Image FLIP	Vertical, Horizontal ON / OFF
Inverse Mode	ON / OFF
Freeze Mode	ON / OFF
Image Mode	Gray / Rainbow / Iron / Glowbow / 2 Color
D-ZOOM	N/A
AGC Mode	OFF / AGC / WAGC
Contrast	Settable 1 ~ 255(when AGC OFF)
Brightness	Settable 1 ~ 255(when AGC OFF)
Level	x1 / x1.5 / x2 / x2.5 / x3 / x5 / x8 / x15 / x30
ROI	Full / Center / Under / Upper / Left / Right
Output Mode	NTSC / PAL
OSD Menu	Not Available
MECHANISM	
ELECTRICAL	
Power Consumption	DC 12V 1.22A 14.64@ (Max)
Power Supply	DC12V (2A), PoE (IEEE802.3at)
OTHERS	
Dimensions	337.1mm(W) x 273.6mm(H) x 145.4mm(D)
Weight	2.3Kg
Certifications	CE, FCC, IP66
Outside Control	Focus, OSD
Construction	Aluminum die casting
Communication	Rs-485 (Pelco-D 2400 / 4800 / 9600bps), KEYPAD (5Key)
Storage Temperature	-35°C ~ 60°C
Operating Temperature	-35°C ~ 55°C (When the camera operation continues, and it does not mean that the camera start to work at -35°C) -15°C ~ 55°C (When the first start the system at the lowest temperature required)

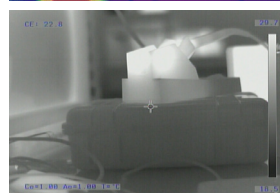
TEMP. MEASUREMENT



- Spot Temp. Measurement
- Set 10 Spot positions of Temperature detect



- Area Temp. Measurement
- Area set function
 - Displaying Average/highest/lowest temperature on screen



- Center Temp. Measurement
- Displaying the temperature data of center position on screen

DIMENSIONS

